

**legrand**

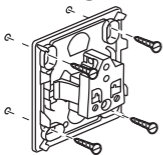
## Oteo

- Contactdoos zonder aarding
- Prise sans terre
- 16 A - 250 V $\sim$

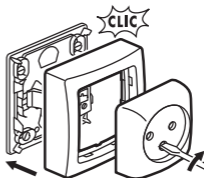
860 24

[www.legrand.be/montage](http://www.legrand.be/montage)

### • Montage



- \* Schroeven niet meegeleverd
- \* Vis non fournies



### • Bedrading/Câblage (stijve kabel/câble rigide: 2,5 m<sup>2</sup>)

