

770 50

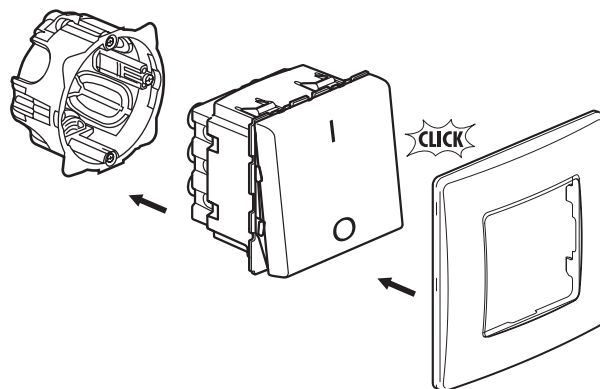
1. USE

Lighting control mechanisms, generally with, or without signalling elements.

2. RANGE

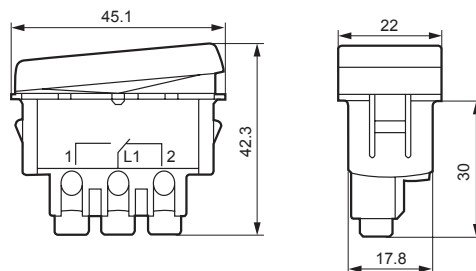
	Designation	Cat. No.	No. of modules	Connection methods	Weight (g)	Caracteristiques
	Two-pole switch	396628 396629 397122 397668	2	with screws	42	20 AX - 250 V.

3. PREPARATION



4. OVERALL DIMENSIONS

396628
396629
397122
397668



5. CONNECTION

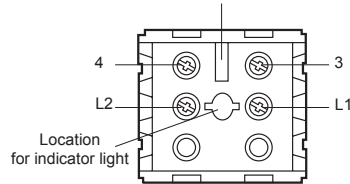
Terminal type: Screw terminals

Min. terminal capacity: 2 x 4 mm²

Type of screwdriver: Posidrive 1, Philips 1, Flat blade 4 mm

396628, 396629, 397122, 397668

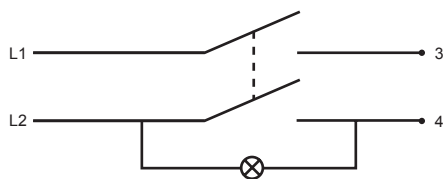
Stripping length guide



5.1 Wiring

Illuminated function: illuminates the switch in the dark.

Cat. Nos. 770 50/52



6. OPERATION

Switch mechanism (handling force 2 to 3 N).

7. TECHNICAL CHARACTERISTICS

7.1 Mechanical characteristics

Impact tests: IK 04

Penetration by solid/liquid bodies: IP 31 (C15100)

7.2 Material characteristics

Rocker: ABS (RAL 9003)

Base: Polycarbonate

Rocker support: Polycarbonate

7.3 Electrical characteristics

Self-extinguishing: 650° C / 30 s

Voltage: 250 V

Current: 20 AX

7.4 Climatic characteristics

Storage temperatures: - 10° C to + 70° C

Operation temperature: - 5° C to + 50° C

8. CLEANING

Surface cleaning with a cloth.

Do not use : acetone, tar remover, trichloroethylene.

8.1 Resistance to cleaning agents

Resistance to the following agents : Hexane (EN60669-1), Methylated spirits, Soapy water, Diluted ammonia, Diluted pure bleach 10%, Glass cleaning substance, Pre-impregnated wipes.

8.2 Resistance to hospital-type cleaning agents

Resistance to the following agents: Anios, Surfanios, Bactily sine, Diluted hydrogen peroxide (35%).

Caution: A preliminary test should be carried out if other specific cleaning products are to be used.

9. ACCESSORIES

Light for switches with indicator light: Cat. No. 676 64 (230 V - 2.4 mA)

10. CONFORMITY - APPROVALS

Approvals in process: NF - CEBEC - BBJ